



## LTC-S2007 Advanced HD Lecturer Tracking Camera



Video demo @  
<http://youtu.be/FBgCNrb8bW4>



iSmart Video are very excited to unveil the new LTC-S2007 HD lecturer tracking camera, it adopts the most state-of-the-art face recognition and motion tracking technology, it can precisely lock and track lecturer all around the whole classroom automatically, no need extra sensor, completely unmanned. Easy connect and almost zero set up.

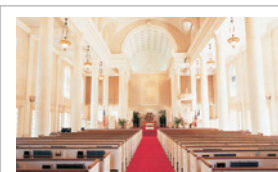
### Application



Lecture Capture



Training



House of Worship



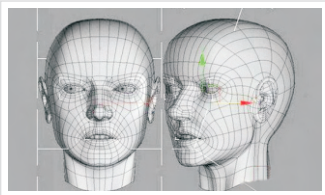
Medical

## With LTC-S2007, you will benefit



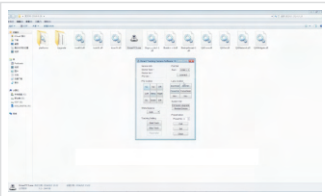
- **Standalone device, no need extra sensor**

Built-in tracking module, the two lens manage the tracking algorithm, tracking is realized by camera itself.



- **Precise lock and track capability**

Tracking is based on face recognition and motion tracking technology, camera still tracks even if object turns around or stands still. Also it is free of interference from other moving object, lights change or projector.



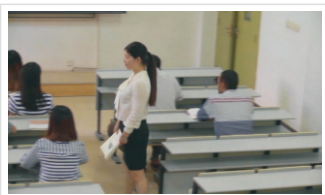
- **Easy connect and almost zero setup**

Plug-N-Play design, simply have power, video & control interfaces connected, then use control software installed in PC to set up.



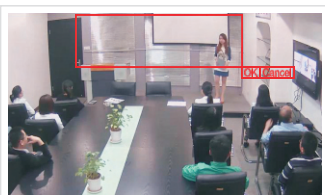
- **Smart tracking performance**

Not tracking on mirror movements; tilt motion and auto zoom function implemented to track precisely when lecturer moves closer / farther from the camera; Object lost, camera moves back to pre-defined position.



- **No limit to tracking area**

The camera can track lecturer all round the classroom, even if lecturer walks into students area.



- **Priority tracking zone and blocking zones**

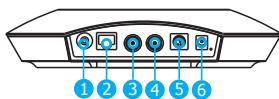
The camera provides 1 priority tracking zone to address the issue that incorrect tracking object is tracked; the 8 blocking zones are used to block projector(s) or other interference sources.

## Technical Data

Model		LTC-S2007
<b>Tracking Camera</b>		
Image Sensor	1/2.8" Exmor CMOS 2,140,000 Pixels	
Lens	f=4.9mm - 94.0mm; F1.6-F3.5	
Zoom	Optical: 20X; Digital: 12X	
Field of View	59.5°-3.3°	
Focus	Auto, Manual, One Push	
Min. illumination	0.5 lux	
Shutter Speed	1/1 to 1/10,000s	
Gain	Auto / Manual	
White Balance	Auto, Indoor, Outdoor, One Push, Manual	
Exposure	Auto, Manual, Shutter Pri, Iris Pri	
S/N Ratio	≥50dB	
<b>Full View Camera</b>		
Image Sensor	1/3" CMOS	
Effective Pixel	2,100,000 Pixels	
White Balance	Auto	
Exposure	Auto	
Field of View	Horizontal: 92°; Vertical: 50°	
Lens	3.73mm	
<b>PTZ</b>		
Pan/Tilt Angle	Pan: -170° ~ +170°; Tilt: -30° ~ +90°	
Pan/Tilt Speed	Pan: 0.1° ~ 160°/s; Tilt: 0.1° ~ 120°/s	
Presets Number	256	
Comm. Interface	RS-485, RS-232	
Protocol	PELCO-D/P, VISCA	
<b>Video</b>		
Video Output	HD-SDI (2 channel)	
Video Format	HD: 1080p/60, 1080p/50, 1080p/30, 1080p/25, 1080i/60, 1080i/50, 720p/60, 720p/50, 720p/30, 720p/25	
<b>General</b>		
Power Supply	DC12V	
Power Consumption	< 20W	
Working Temp	0°C ~ +40°C	
Storage Temp	-20°C ~ +60°C	
Dimension	226mm * 163mm * 212mm	
Weight	1.96KG	
Color	Grey	

\* Design and specifications are subject to change without notice.

## Rear View & Installation



- ① Reserved
- ② Upgrade Port
- ③ HD-SDI 1
- ④ HD-SDI 2
- ⑤ RS232+RS485
- ⑥ Power



Wall mount



Ceiling mount

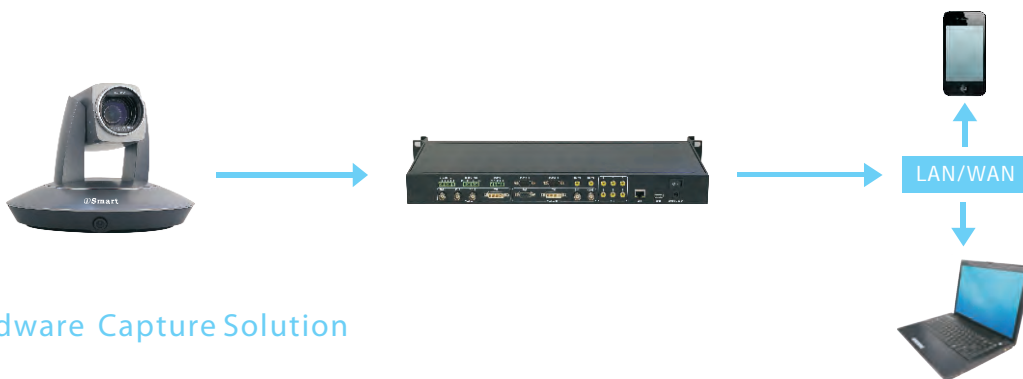
## Typical Implementation



Software Capture Solution



Portable Capture Solution



Hardware Capture Solution



Edustus, maahantuonti ja markkinointi:  
FinnAV Oy MediaSolution, Kantelettarentie 7 R, 00420 HELSINKI  
P. 09 - 879 5639, info@mediasolution.fi, www.mediasolution.fi

